

IEC appliance inlet C8, snap-in mounting, front side, solder terminal



Snap-In Version

**Description**

- Panel Mount:
Snap-In Version, from front side
- Inlet, Pin temperature 70 °C, Protection class II
- PCB

Approvals

- VDE License Number: 40017311
- UL License Number: E96454
- CSA License Number: 73165

Weblinks

[Approvals](#), [RoHS](#), [CHINA-RoHS](#), [e-Store](#), [SCHURTER-Stock-Check](#), [Distributor-Stock-Check](#)

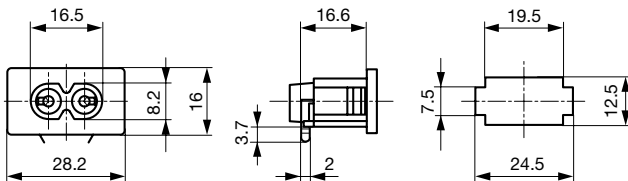
Technical Data

Ratings IEC	2.5 A / 250 VAC; 50 Hz
Ratings UL/CSA	2.5 A / 250 VAC; 60 Hz
Dielectric Strength	> 2 kVAC between L-N (1 min/50 Hz)
Allowable Operation Temp.	-25 °C to 70 °C
Degree of Protection	from front side IP 40 acc. to IEC 60529
Protection Class	Suitable for appliances with protection class II acc. to IEC 61140
Terminal	PCB solder terminals
Panel Thickness s	Snap-in from 0.8 - 1.2 mm
Material: Housing	Thermoplastic, black, UL 94V-0

Appliance-Inlet/-Outlet	C8 acc. to IEC/EN 60320-1, UL 498, CSA C22.2 no. 42 (for cold conditions) pin-temperature 70 °C, 2.5 A, Protection class II
-------------------------	---

Dimensions

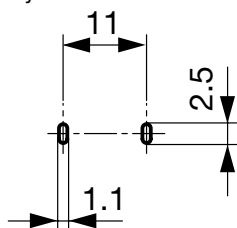
0721-PP

Length  28.2 mm

Solder terminals for PCB

Drilling diagrams

PCB Layout



Variants

[Distributor-Stock-Check](#) | [SCHURTER-Stock-Check](#) | [e-Store](#)

Type	Panel mounting	Panel Thickness s [mm]	Terminal	Order Number
0721-PP	Snap-in	0.8 - 1.2	PCB solder terminals	4300.0099

Packaging unit 50 Pcs